



5 Year Fencing Program on the Hudson Line Section of the Empire Corridor

Introduction - Empire Corridor Hudson Line

- CSX is the owner of the corridor
- In 2012, Amtrak entered into a long-term lease to assume operations/maintenance
- Lease allowed Amtrak to prioritize passenger trains over freight trains
- Passenger trains require higher-level of safety/ security standards
- Based on pedestrian trespass/vehicle intrusions along corridor and FRA recommendations Amtrak introduced fencing initiative

Reports to Congress

National Strategy to Prevent Trespassing on Railroad Property

- Trespassing on railroad property is the leading cause of all rail-related deaths in the United States.
- More people are struck and killed by trains each year while trespassing on railroad property than in motor vehicle collisions with trains at highway-rail grade crossings.
- Between 2012 and 2017, the annual number of trespass-related pedestrian fatalities increased 18 percent, from 725 people killed in 2012 to 855 in 2017.
- In calendar year 2018, 324 pedestrian trespass fatalities had occurred by July 31, 2018.
- New York ranks 4th in trespassing fatalities in the nation.
- Every 3 hours in the U.S someone is hit by a train at a crossing or trespassing on RR property

Purpose and Need

Purpose

- Enhance the safety/security of this segment of the Empire Corridor
- Protect customers, employees and the public
- Prevent derailment

Need

- Pedestrians trespass/vehicles intrusions - since 2014 - 10 fatalities on the segment proposed to be fenced
- Public utilizing private railroad right-of-way to access Hudson River
- Under State Railroad Law - It is illegal to access private railroad property anywhere other than a designated pedestrian or roadway crossing
- Each emergency breaking incident has the potential to cause train derailment
- This segment serves 26 daily trains/more than one million passengers annually

Initial Project – January 2018

- Amtrak submitted Federal Consistency Assessment Form to NYSDOS for Year 1 of Fencing Program
 - 2,000 feet +/- of fencing at strategic locations along corridor
 - 8 foot high, steel fencing
- DOS received more than 300 public comments
- DOT asked Amtrak to withdraw application
 - Reformulate project for entire corridor
 - Incorporate comments to extent practical
 - Conduct extensive public outreach/stakeholder involvement
- Amtrak in process of reformulating proposal



*Amtrak Standard Impasse Fence
Proposed at various locations in 2018*

Stakeholders

Amtrak

- Responsible for operations, maintenance, and dispatching on segment of corridor
- Project proposer/manager
- Subject to NEPA

NYS Department of State

- Conduct Coastal Consistency review/provide determination per New York State Coastal Management Program

NYSDOT

- Provide percentage of project funding pursuant to Passenger Rail Improvement and Investment Act (Section 209)

Scenic Hudson

- Help Hudson Valley communities protect the river/natural resources

Municipalities along the Corridor

- * Maintain public access areas - i.e. boat launches, parks etc...

- April 2018 - Amtrak met with elected officials including: town supervisors/mayors; Congressperson; members of State Assembly/Senate
- August 2018 - Amtrak held first of two onsite meetings held with town/village Officials
- August 2018 - Amtrak held second onsite meetings held with town/village Officials
- July 2019 - Amtrak meet with a subset of mayors/supervisors and Scenic Hudson
- August 2019 – NYSDOS and NYSDOT met with elected officials including: town supervisors/mayors; members of State Assembly/Senate; Chamber; and Scenic Hudson
- October 2019 - Amtrak Engineering Project Staff met with town of Stuyvesant first responders
- DOT has requested two additional corridor-wide meetings once reformulated plan resubmitted.

QUESTIONS?

Amtrak Proposal

- 4 ft high fence at strategic grade crossing locations
- Fence pickets are spaced further apart and lower height offers more open appearance



Reformulated Proposal

- Amtrak has identified locations for the proposed fencing
- Adjustments made based on outreach with communities/ first responders
- Project information materials being revised to:
 - Provide clear purpose/need
 - Articulate locations, fence heights and provide maps/renderings
 - Clarify no public crossings are being eliminated
- Enhancing wayfinding signs to direct pedestrians/motorists to protected crossing

Public Comment – Eliminating Access

Comment

- Amtrak is proposing to close public crossings

Facts

- No public crossings are being eliminated/all existing public crossings will remain open
- Under State Railroad Law, there is a regulatory process for establishing public highway-railroad grade crossings
- Amtrak will work with communities that obtain necessary approvals for new public crossing to adjust fence installed under this initiative
- Initiative is intended to address trespassing; avoid collisions
- Amtrak trains travel at speeds of up to 110 miles per hour along corridor

Public Comments – Coastal Management

Comment

Amtrak fencing initiative is inconsistent with New York State's Coastal Consistency Policies

Facts

- The safety initiative does not preclude public access to the Hudson River/shoreline
- The initiative is intended to guide pedestrians/motorists to protected crossings
- The initiative is also intended to mitigate trespassing on private property

Public Comments – Future Plans

Comment

- This initiative will impact community waterfront redevelopment projects/availability of public grants

Facts

- Amtrak has in the past and is committed to in the future working with communities on various development proposals adjacent to their right of way

Questions??

Moving into Fencing Plan...

Year 1 (2020) Fencing Program Locations

Within Coastal Zone	Railroad Mile Post	Location	Gates (No.)	Gate Height	Fence (LF)	Fence Height	Near/At Grade Crossing	Closest Grade Crossing	Crossing Railroad Mile Post	Distance to Crossing (mi)
Yes	75.93	Hyde Park Boat Club, Poughkeepsie, NY	2	4 ft	0	N/A	Yes	Captain's Three Crossing	75.95	0.02
Yes	79.28	Hyde Park Station, Poughkeepsie, NY	0	N/A	700	4 ft	Yes	Captain's Three Crossing	75.95	0.67
Yes	89	Rhinecliff Station South Access	1	8 ft	2665	8 ft	Yes	Overhead Bridge Crossing at Rhinecliff Station	89	0.00
Yes	94.6	Barrytown Access	1	8 ft	300	8 ft	No	Tivoli Dock Crossing/ Diana Street	98.95	4.35
Yes	103.5	Cheviot Road, Germantown, NY	2	4 ft	490	4 ft	Yes	Cheviot Road Crossing	103.5	0.00
Yes	104.98	Main Street, Germantown, NY	0	N/A	1625	6 ft	No	Cheviot Road Crossing	103.7	1.28
Yes	106.07	Anchorage Road, Germantown, NY	1	4 ft	685	4 ft	Yes	Dock Road Crossing	106.1	0.03
Yes	118	Stockport Creek Conserve	1	6 ft	780	6 ft	No	Ferry Road Crossing	121.95	3.95
		Year 1 - Total	8		7245					

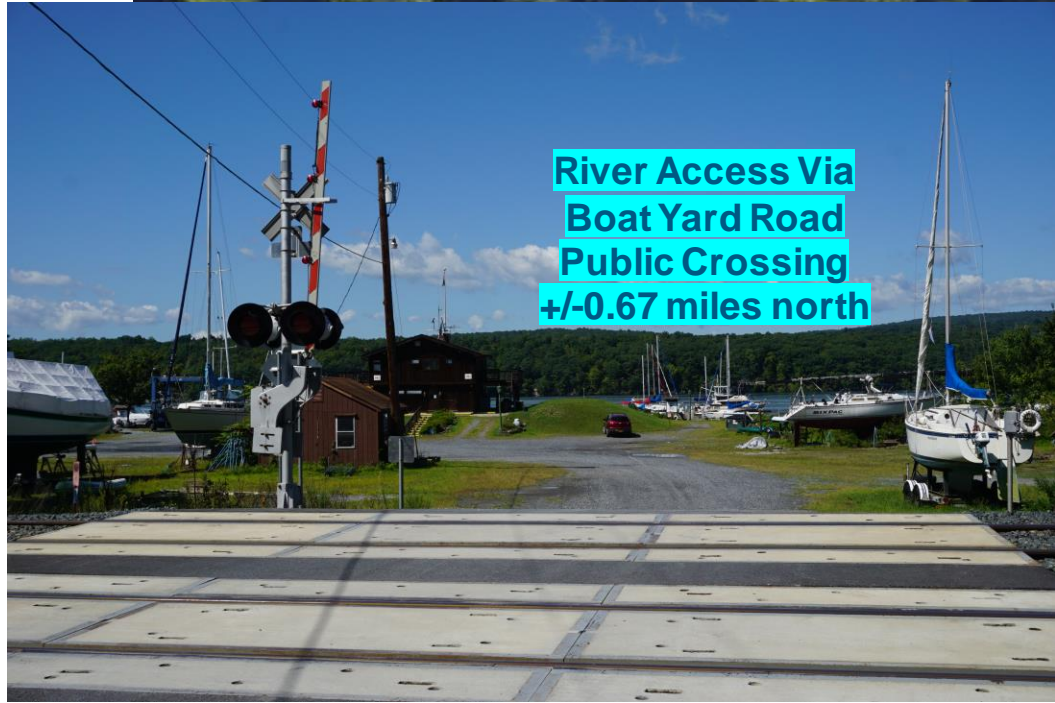
Year 1 Linear Ft by Fence Height:

- 1875 ft of 4' high
- 2405 ft of 6' high
- 2965 ft of 8' high

Hyde Park Boat Club – Mile Post 75.93 – Year 1 - 2020



Hyde Park Station – Mile Post 75.28 – Year 1 - 2020



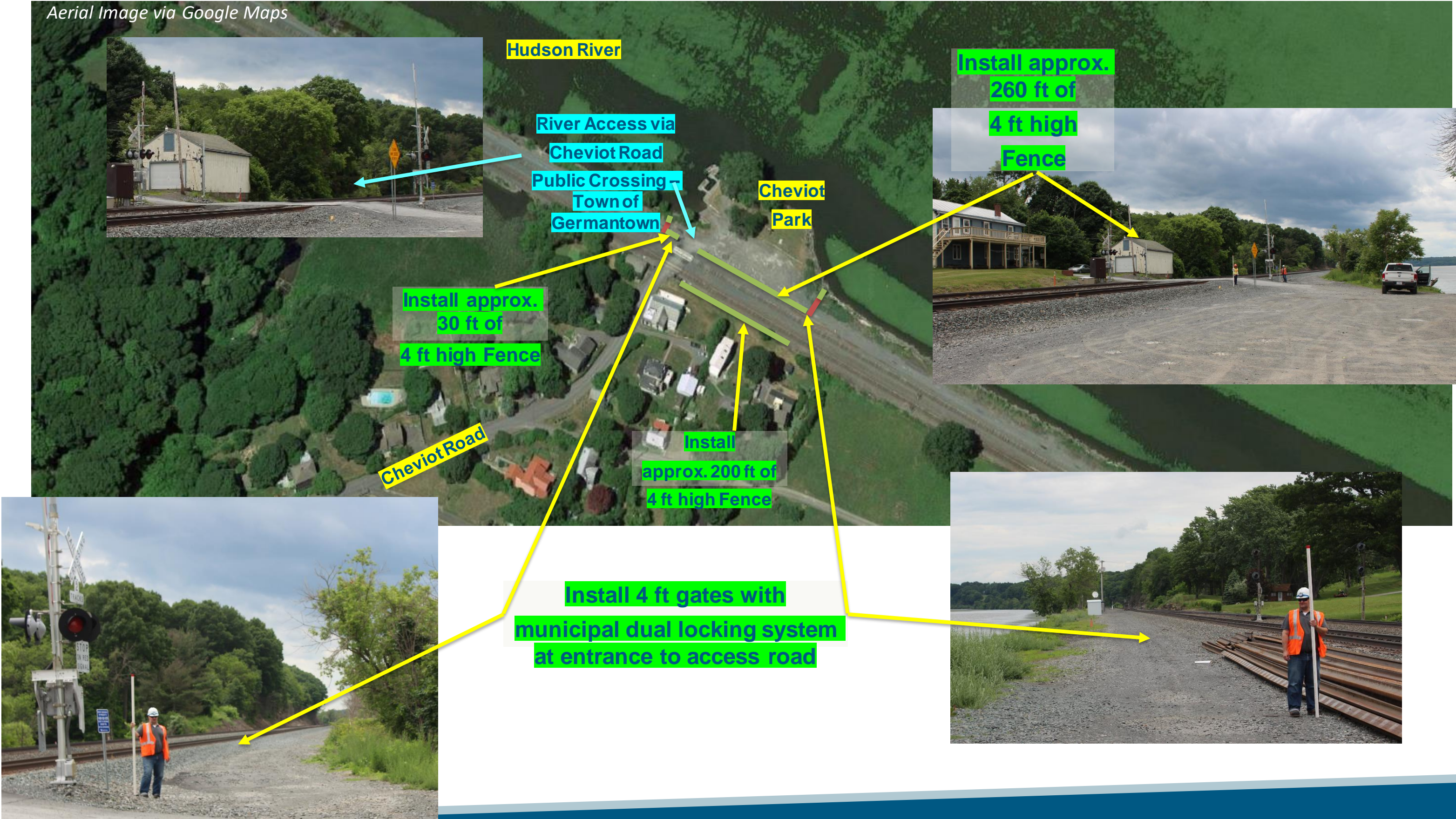
Rhinecliff – Mile Post 89 – Year 1 - 2020



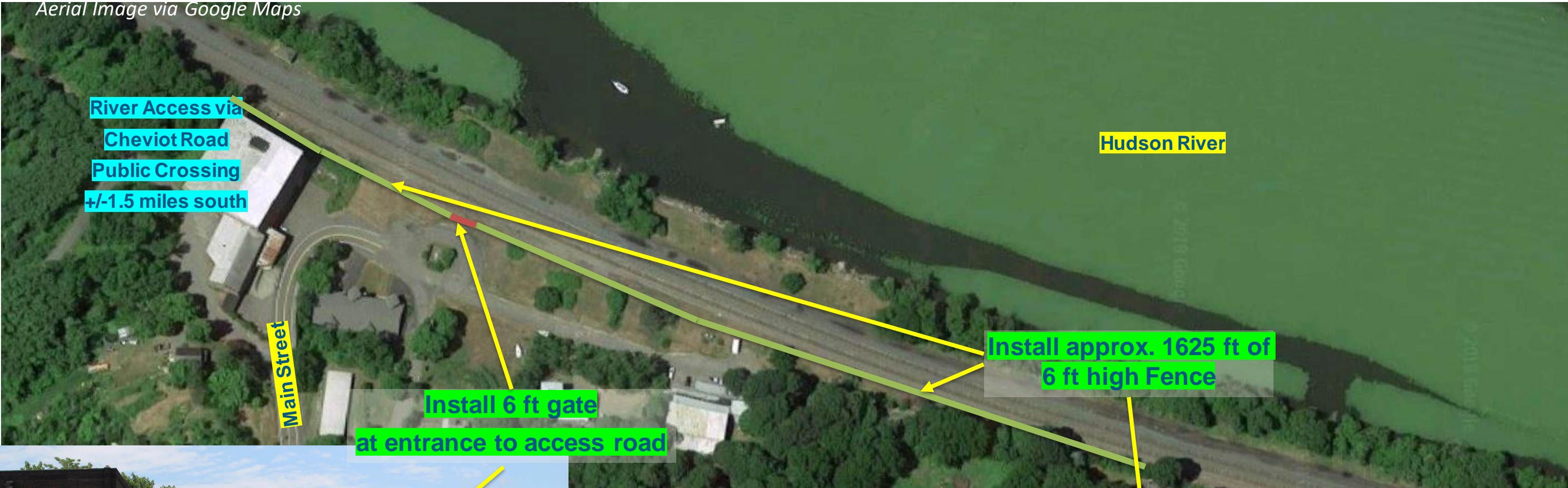
Barrytown – Mile Post 94.6 – Year 1 - 2020



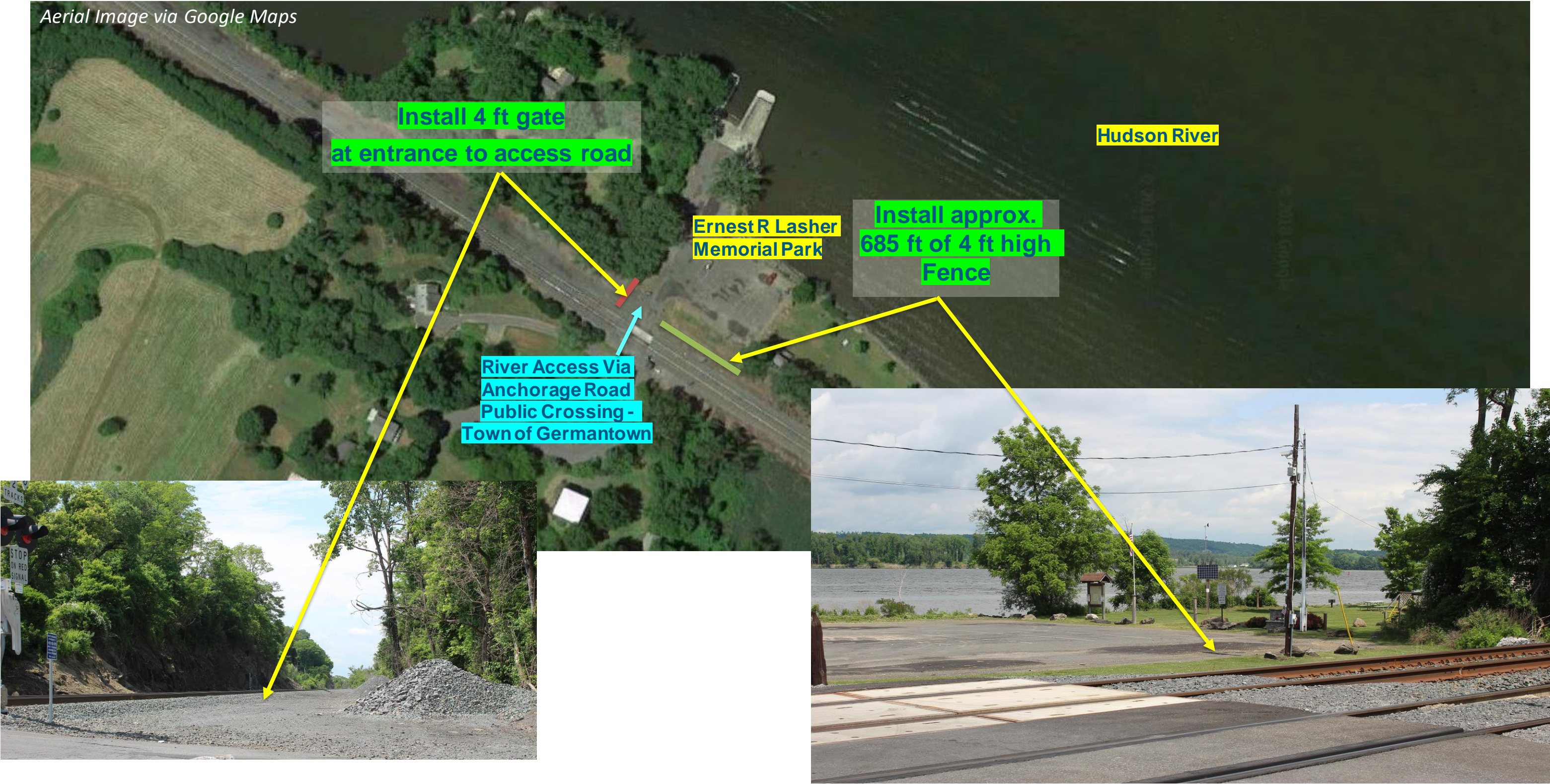
Germantown – Cheviot Rd – Mile Post 103.5 – Year 1 - 2020



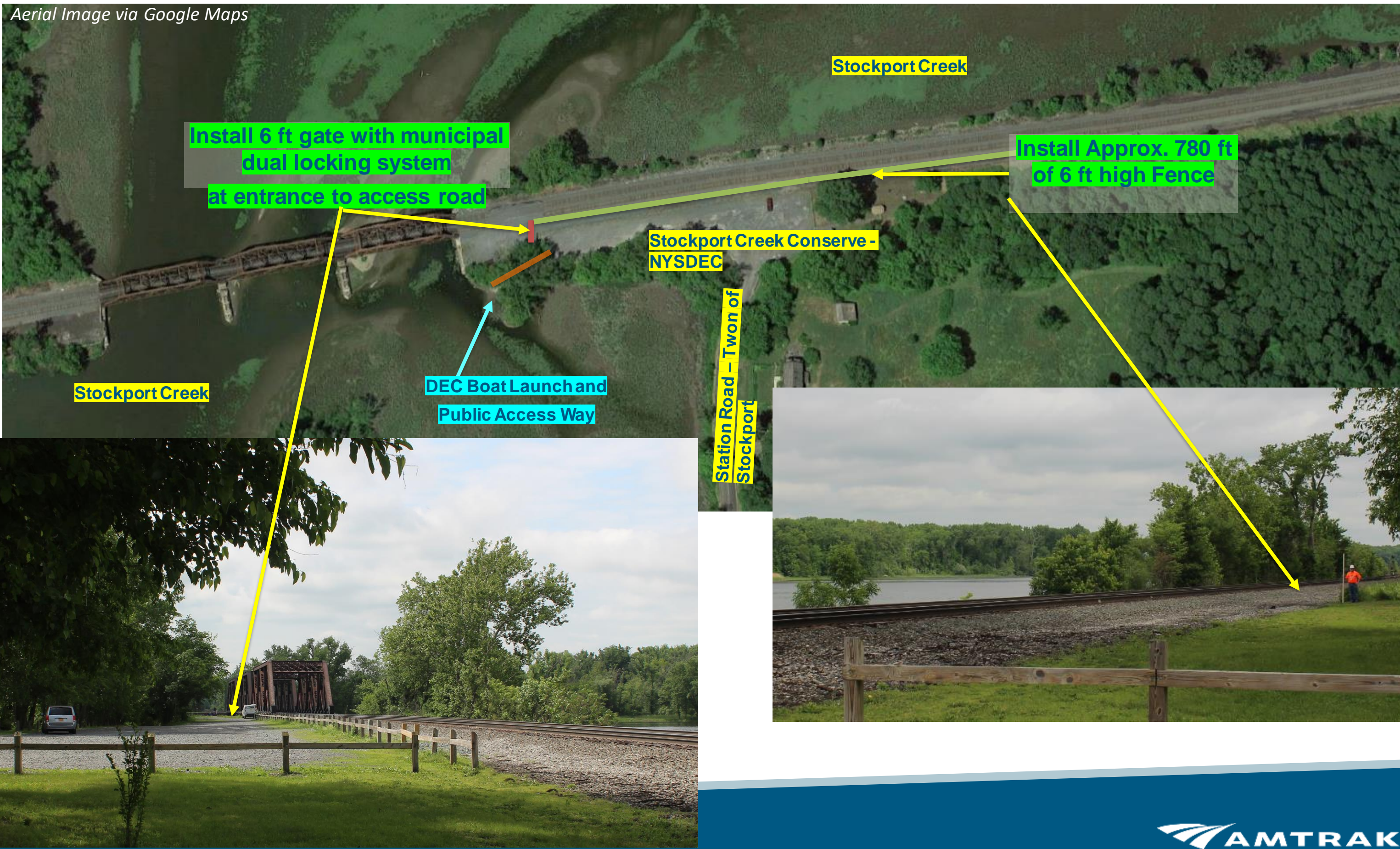
Germantown - Main St – Mile Post 104.98 – Year 1 - 2020



Germantown – Anchorage Road - Mile Post 106.07 – Year 1 -2020



Stockport Creek – Mile Post 118 – Year 1 - 2020



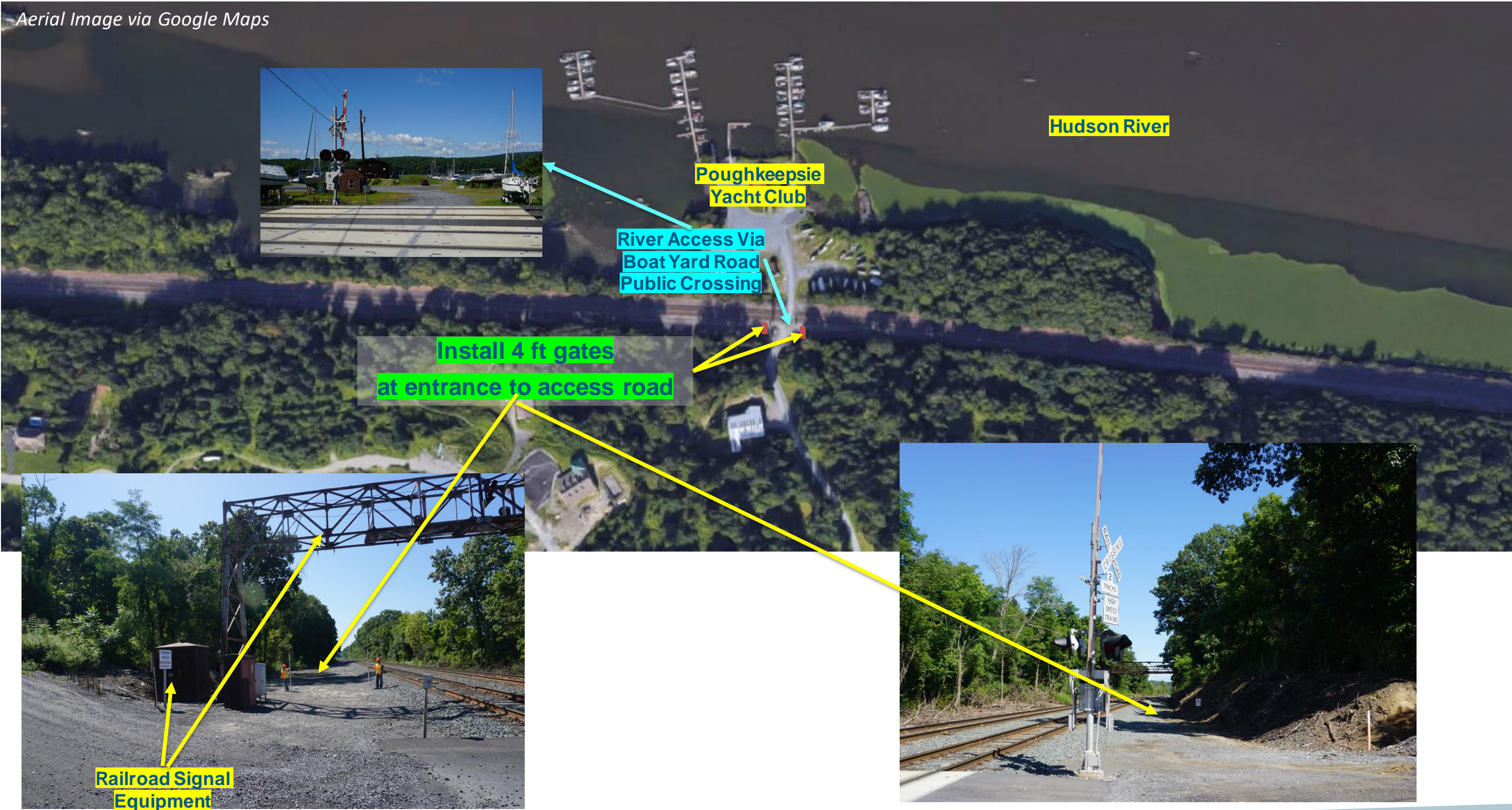
Year 2 (2021) Fencing Program Locations

Within Coastal Zone	MP	Location	Gates (No.)	Gate Height	Fence (LF)	Fence Height	Near/At Grade Crossing	Closest Grade Crossing	MP	Distance to Crossing (mi)
Yes	81.5	Poughkeepsie Yacht Club, Staatsburg, NY	2	4 ft	0	N/A	Yes	Boat Yard Crossing	81.5	0
Yes	83.67	River Road, Staatsburg, NY	3	4 ft	0	N/A	Yes	River Road Crossing	83.7	0.03
Yes	90.1	Slate Dock Road, Rhinecliff, NY	2	8 ft	400	8 ft	Yes	Overhead Bridge Crossing at Rhinecliff Station	89	1.1
Yes	111.93	Rip Van Winkle Bridge, Hudson, NY	1	8 ft	0	N/A	No	Broad Street Crossing	114.3	2.37
Yes	114.4	Broad Street, Hudson, NY	1	5 ft	1570	5 ft	Yes	Broad Street Crossing	114.3	0.1
Yes	121.93	Ferry Road, Stuyvesant, NY	1	4 ft	900	4 ft	Yes	Ferry Road Crossing	121.95	0.02
Yes	123.88	CP124, Stuyvesant, NY	1	8 ft	130	8 ft	Yes	Stuyvesant Road Crossing	124.81	0.93
Yes	124.25	Stuyvesant, NY	3	4 ft	2550	4 ft	Yes	Stuyvesant Road Crossing	124.81	0.56
		Year 2 - Total	15		5500					

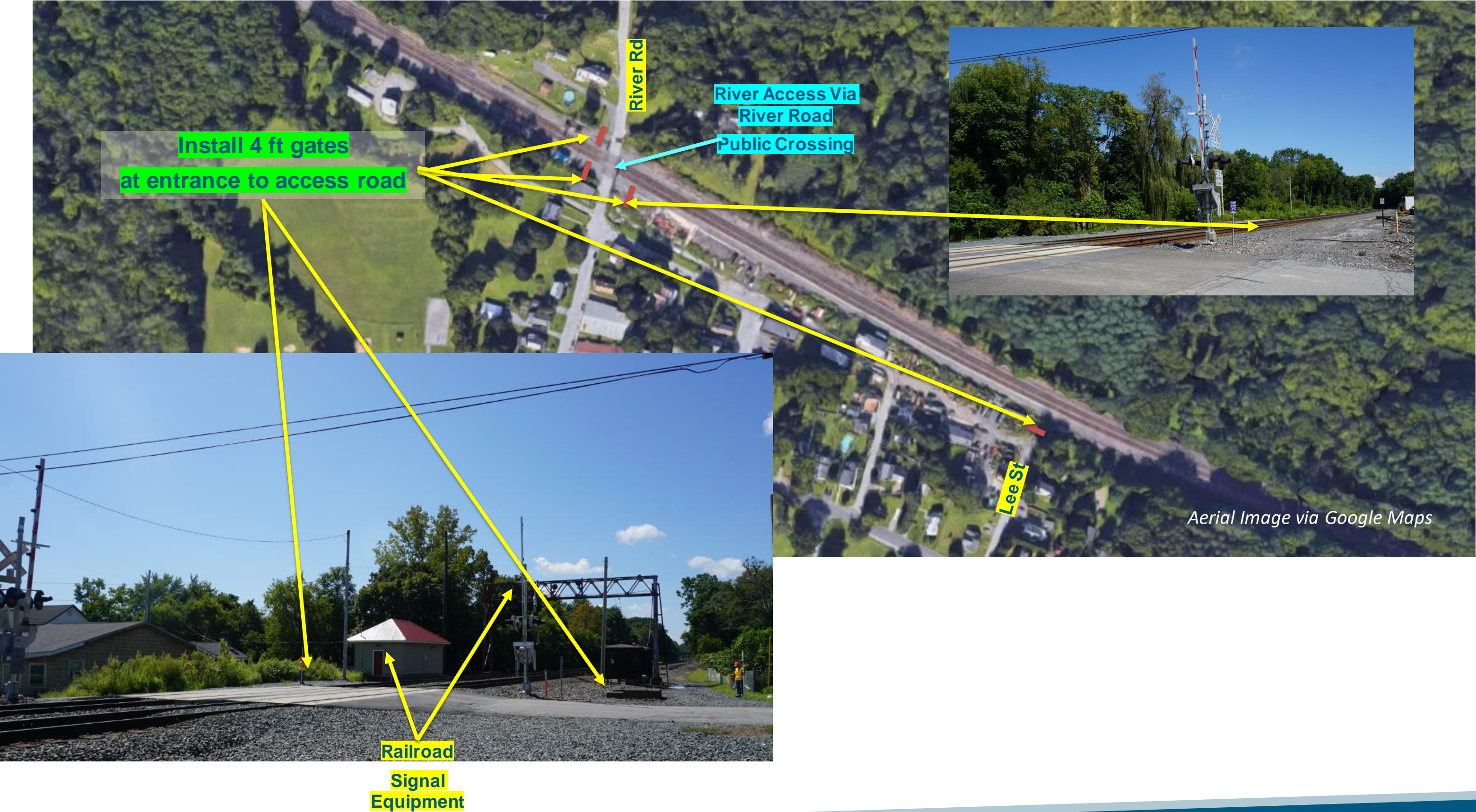
Year 2 Linear Ft by Fence Height:

- 3450 ft of 4' high
- 1570 ft of 5' high
- 530 ft of 8' high

Poughkeepsie Yacht Club Road – Mile Post 81.5 – Year 2 - 2021



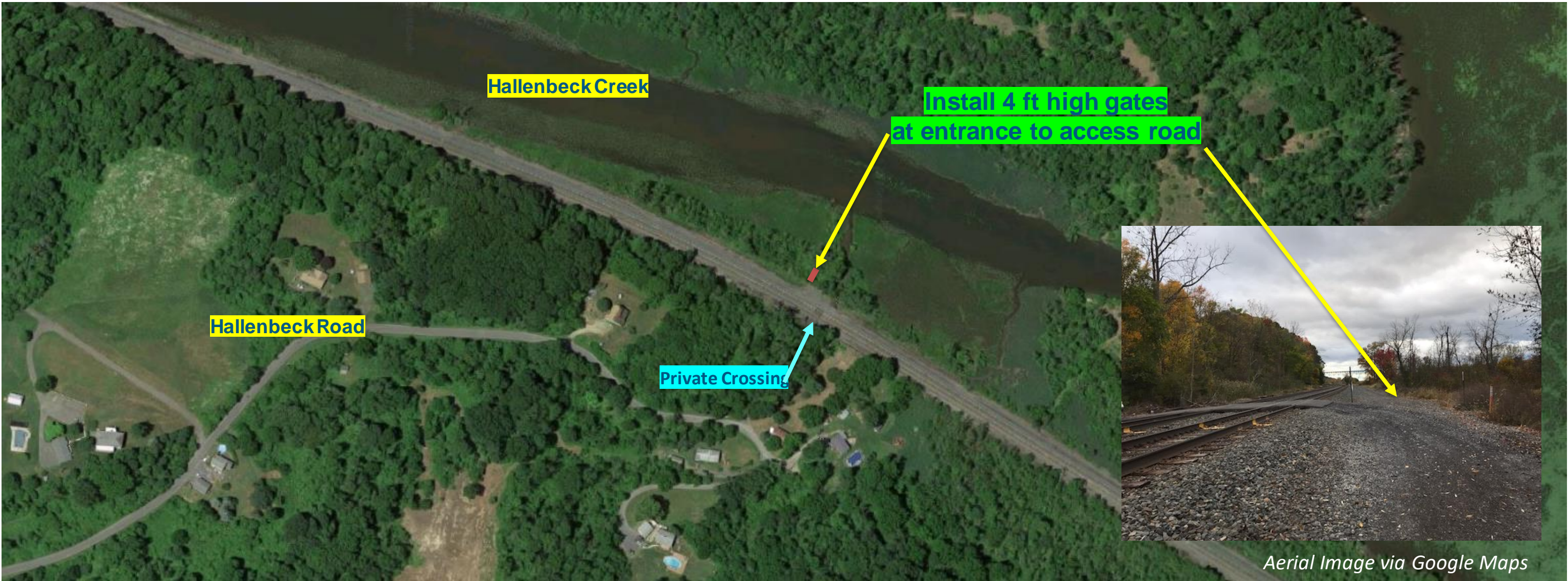
River Road - Staatsburg – Mile Post 83.67– Year 2 - 2021



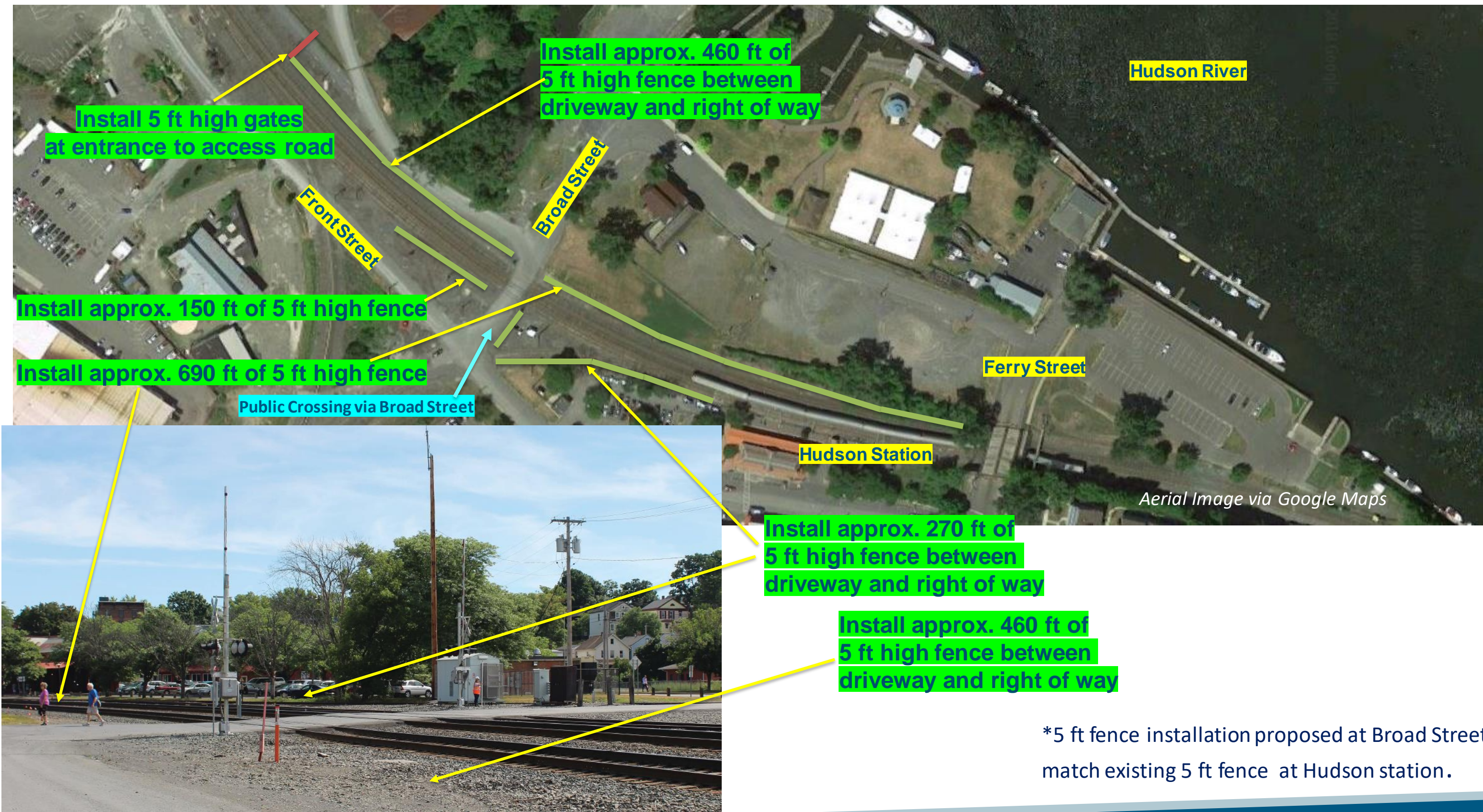
Rhinecliff – Slate Dock Road – Mile Post 90.1 - Year 2 - 2021



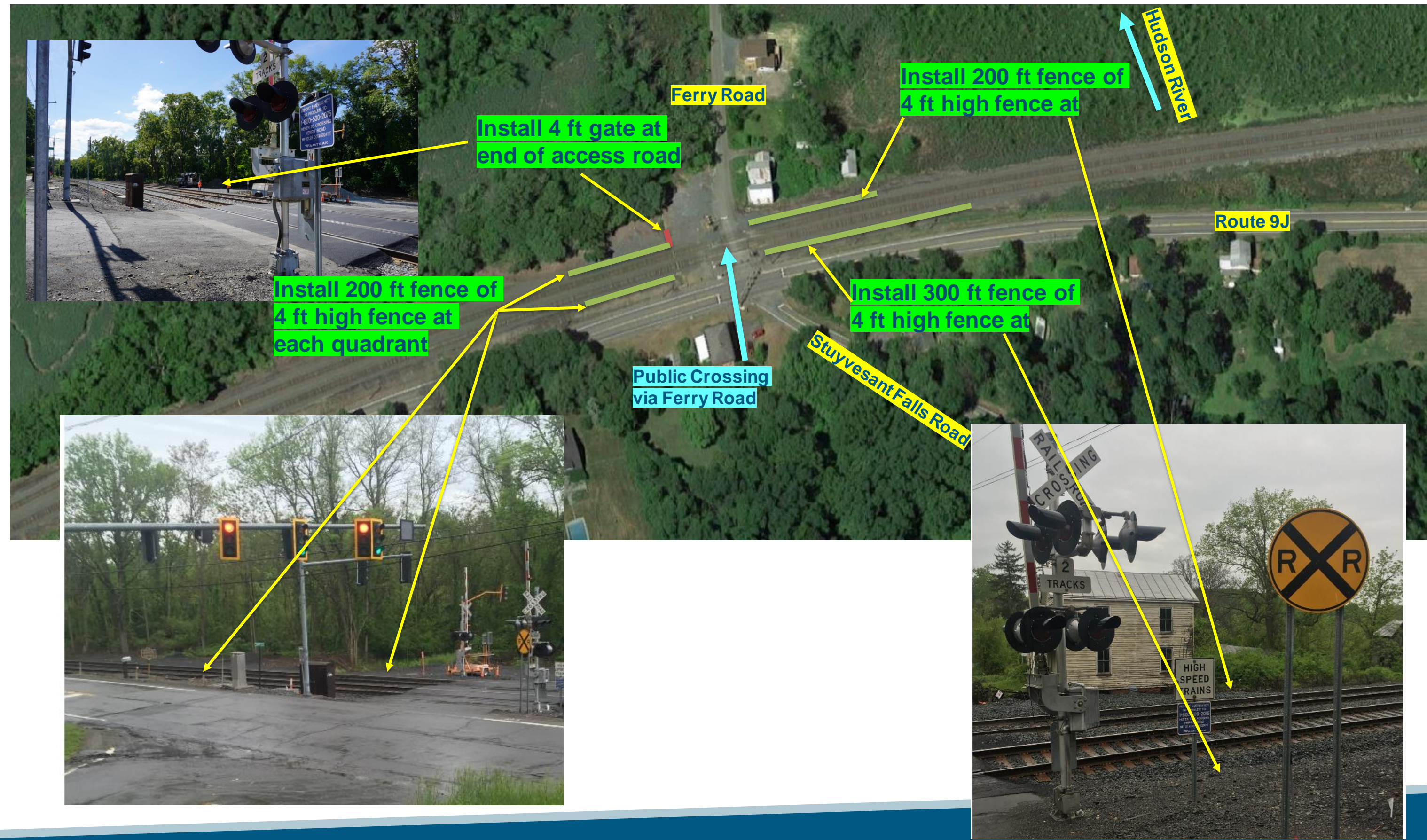
Hudson - Rip Van Winkle Bridge – Mile Post 111.93 – Year 2 - 2021



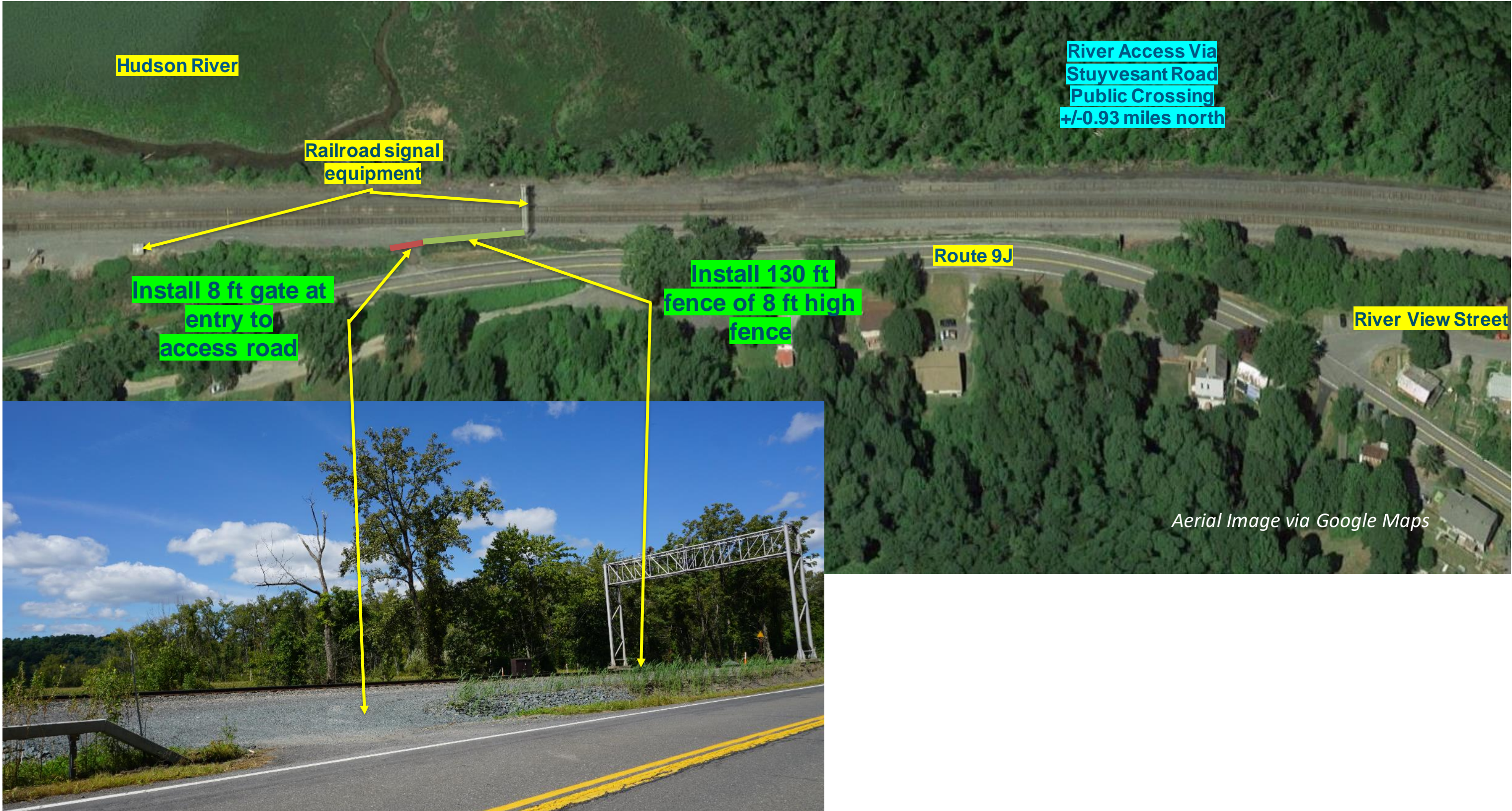
Hudson – Broad Street - Mile Post 114.4 – Year 2 - 2021



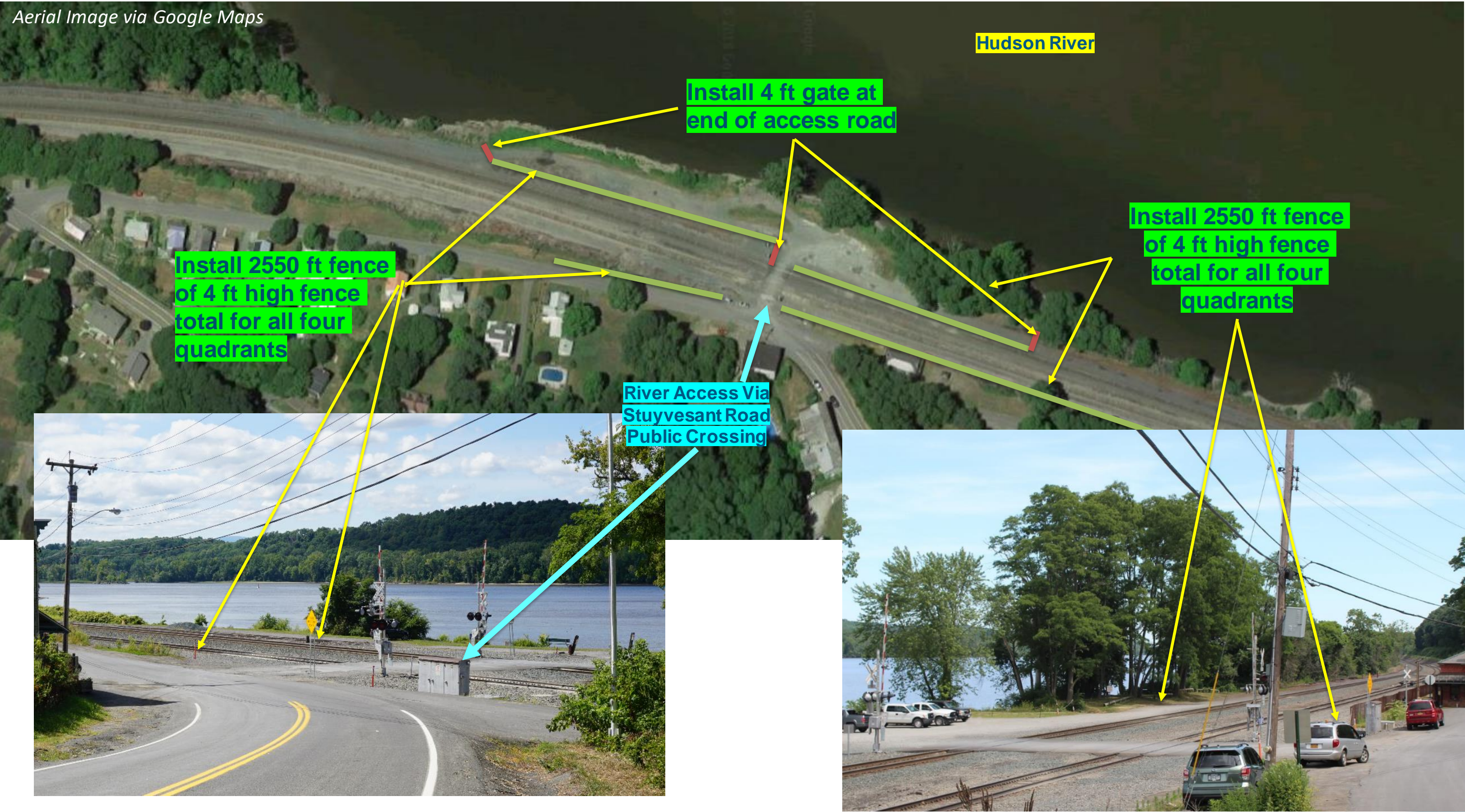
Stuyvesant- Ferry Road – Mile Post 121.93 – Year 2 - 2021



Stuyvesant - Mile Post 123.88 – Year 2 - 2021



Stuyvesant - Mile Post 124.25 – Year 2 - 2021



Year 3 (2022) Fencing Program Locations

Within Coastal Zone	MP	Location	Gates (No.)	Gate Height	Fence (LF)	Fence Height	Near/At Grade Crossing	Closest Grade Crossing	MP	Distance to Crossing (mi)
Yes	98.95	Tivoli Yard Track, Tivoli, NY	3	8 ft	1125	4 ft	Yes	Tivoli Dock Crossing	98.95	0
Yes	114.85	Dock Street, Hudson, NY	1	4 ft	290	4 ft	Yes	Broad Street Crossing	114.3	0.55
Yes	134.92	Hamilton Way, Castleton-On-Hudson, NY	1	8 ft	500	N/A	Yes	Hamilton Printing Crossing	134.92	0
Yes	135.5	Castleton-On-Hudson, NY	1	8 ft	50	8 ft	Yes	Hamilton Printing Crossing	134.92	0.58
Yes	137.18	Stats Island Road, Schodack, NY	3	8 ft	0	N/A	Yes	Staats Island Road Crossing	137.2	0.02
Yes	140.9	Irwin Stewart Port Expy., Rensselaer, NY	1	8 ft	75	8 ft	Yes	Staats Island Road Crossing	137.2	3.7
Yes	140.9	South Street, Rensselaer, NY	1	8 ft	1,250	8 ft	Yes	Staats Island Road Crossing	137.2	3.7
Yes	142	Maintenance Yard, Rensselaer, NY	0	N/A	1,250	8 ft	Yes	Staats Island Road Crossing	137.2	4.8
		Year 3 - Total	11		4,540					

Year 3 Linear Ft by Fence Height:

- 1415 ft of 4' high
- 2625 ft of 8' high

Tivoli - Mile Post 98.95 – Year 3 - 2022

Aerial Image via Google Maps

Hudson River

Install 200 ft of
4 ft high fence at each quadrant

Install 325 ft of 4 ft high fence

Diana Street

River Access Via Diana St
Mile Post 98.95

Signal Equipment
and Rail Yard

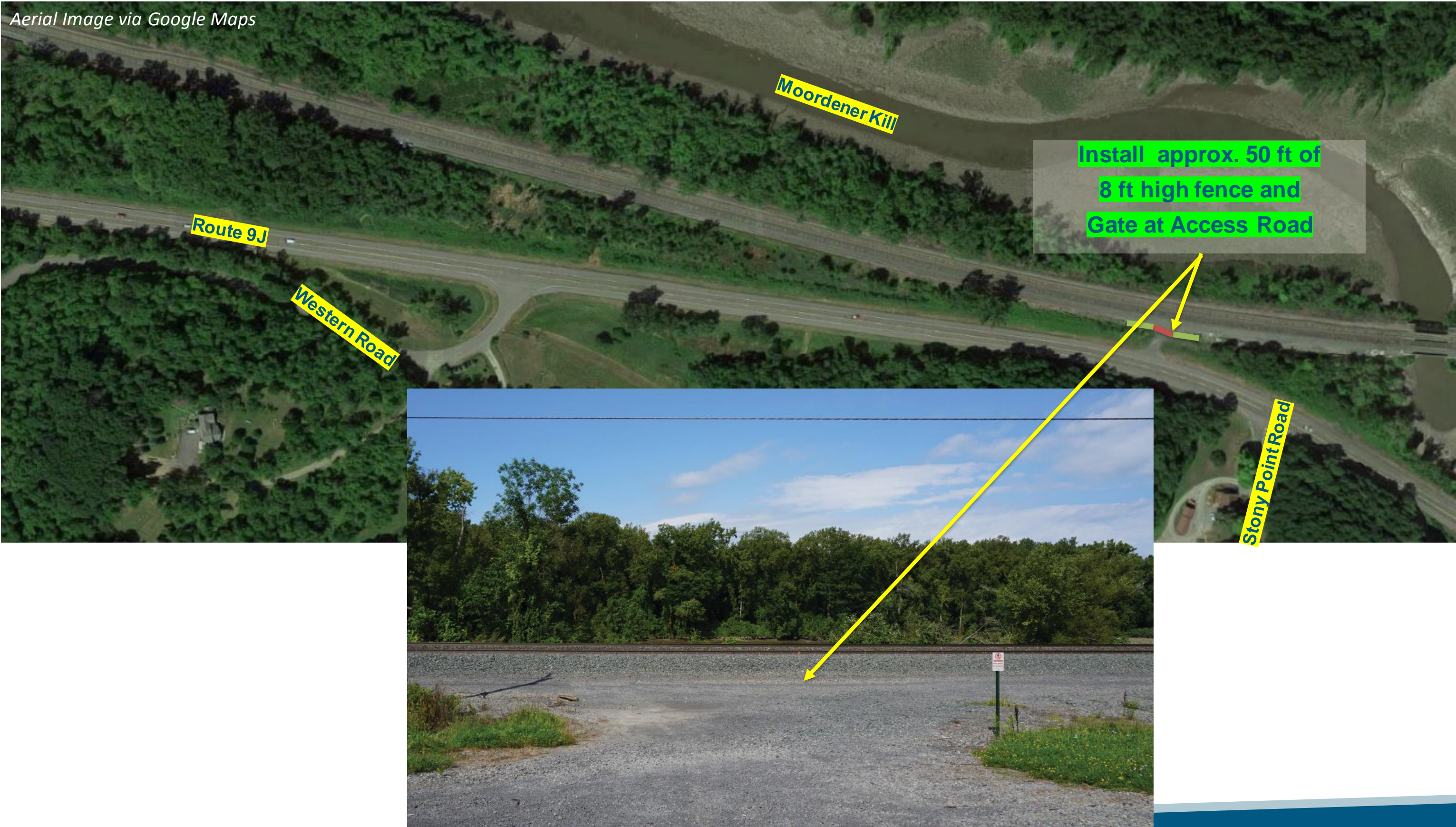
Hudson - Dock Street - Mile Post 114.85 – Year 3 - 2022



Castleton-On-Hudson – Mile Post 134.92 – Year 3 - 2022



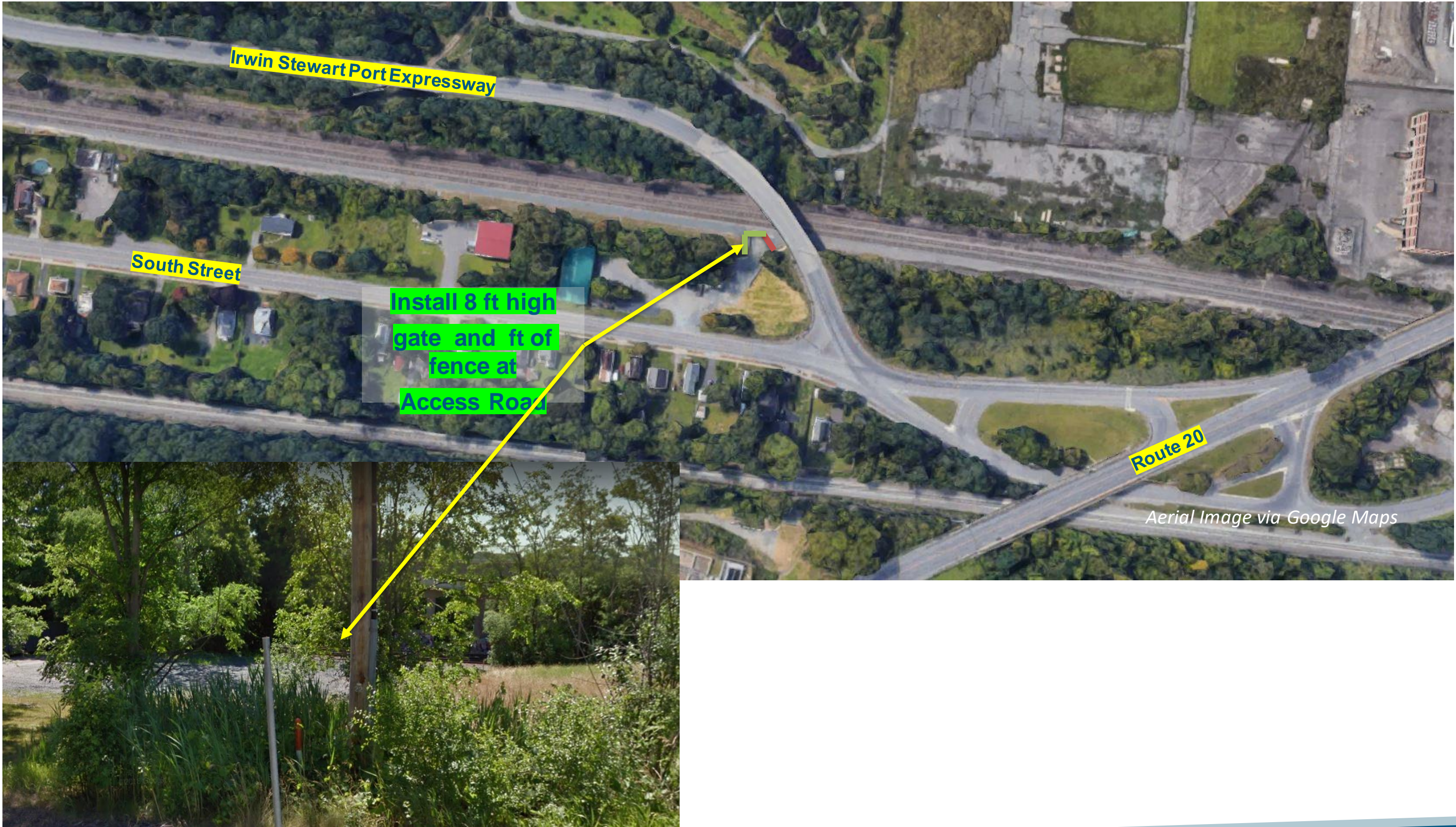
Castleton-On-Hudson – Mile Post 135.5 – Year 3 - 2022



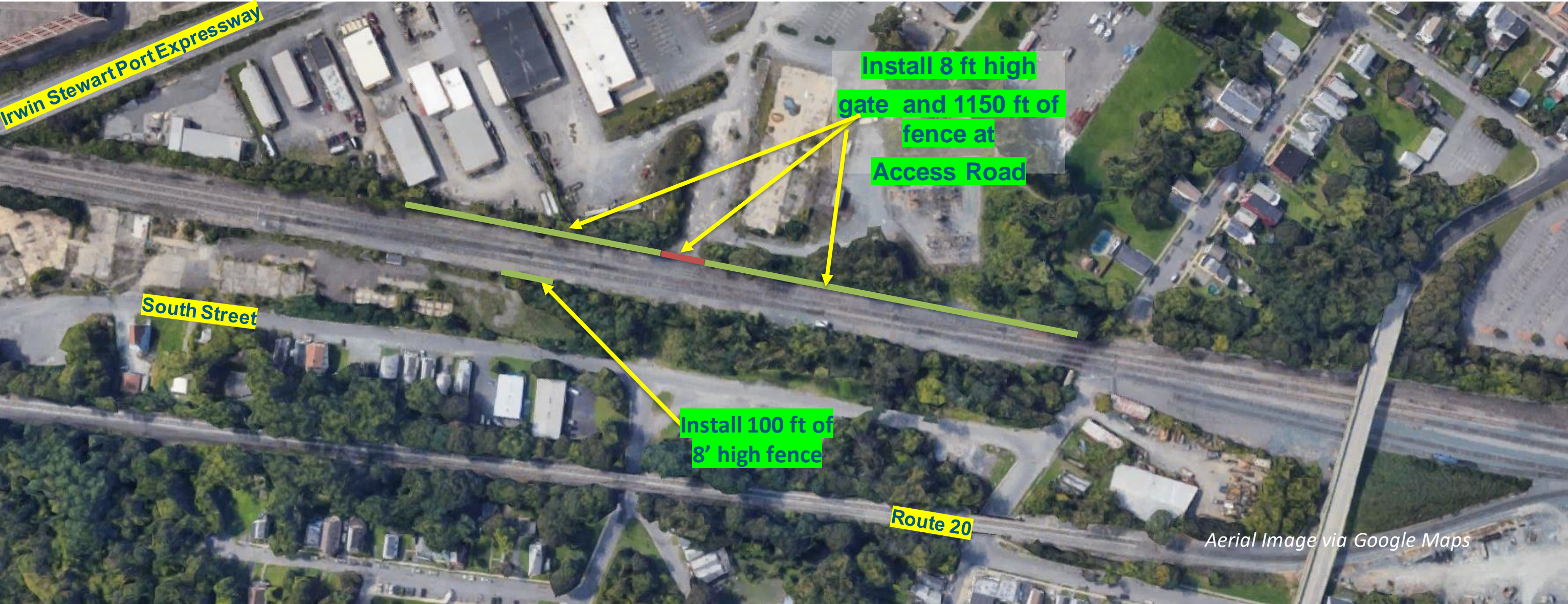
Schodack – Mile Post 137.18 – Year 3 - 2022



Irwin Stewart Port Expy. – Mile Post 140.9 – Year 3 - 2022



Rensselaer, South Street – Mile Post 140.9 – Year 3 - 2022

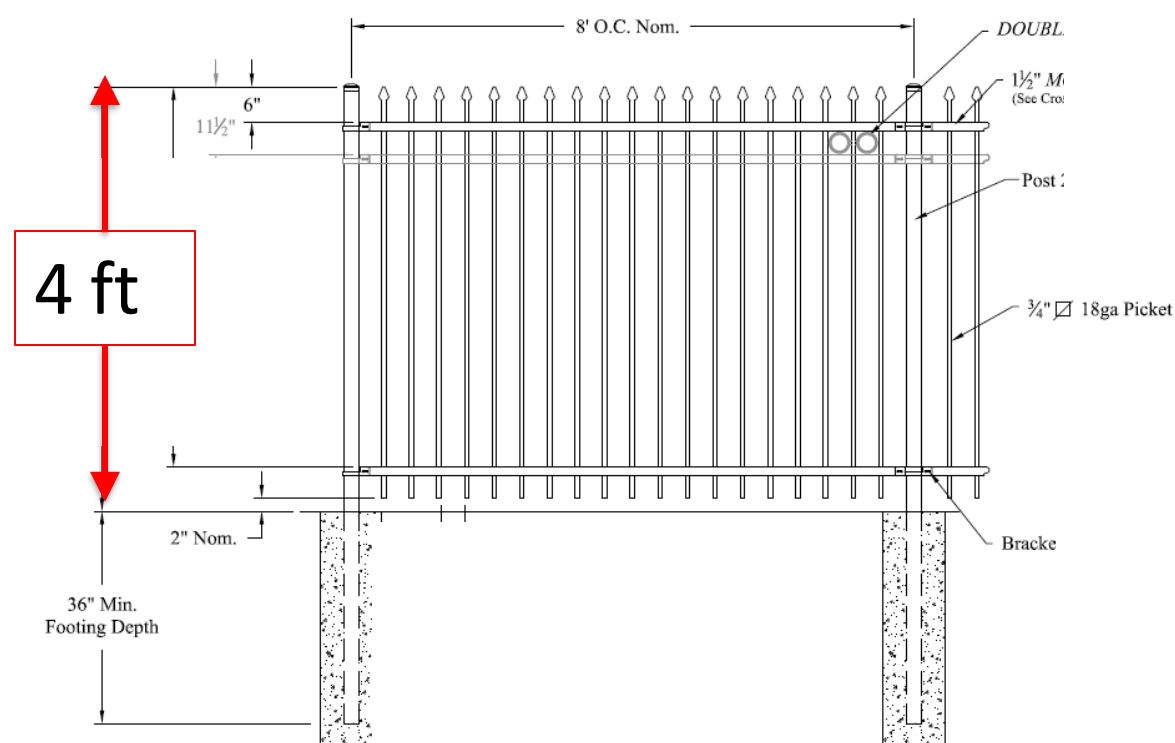


Rensselaer Maintenance Yard – Mile Post 142.0 – Year 3 - 2022



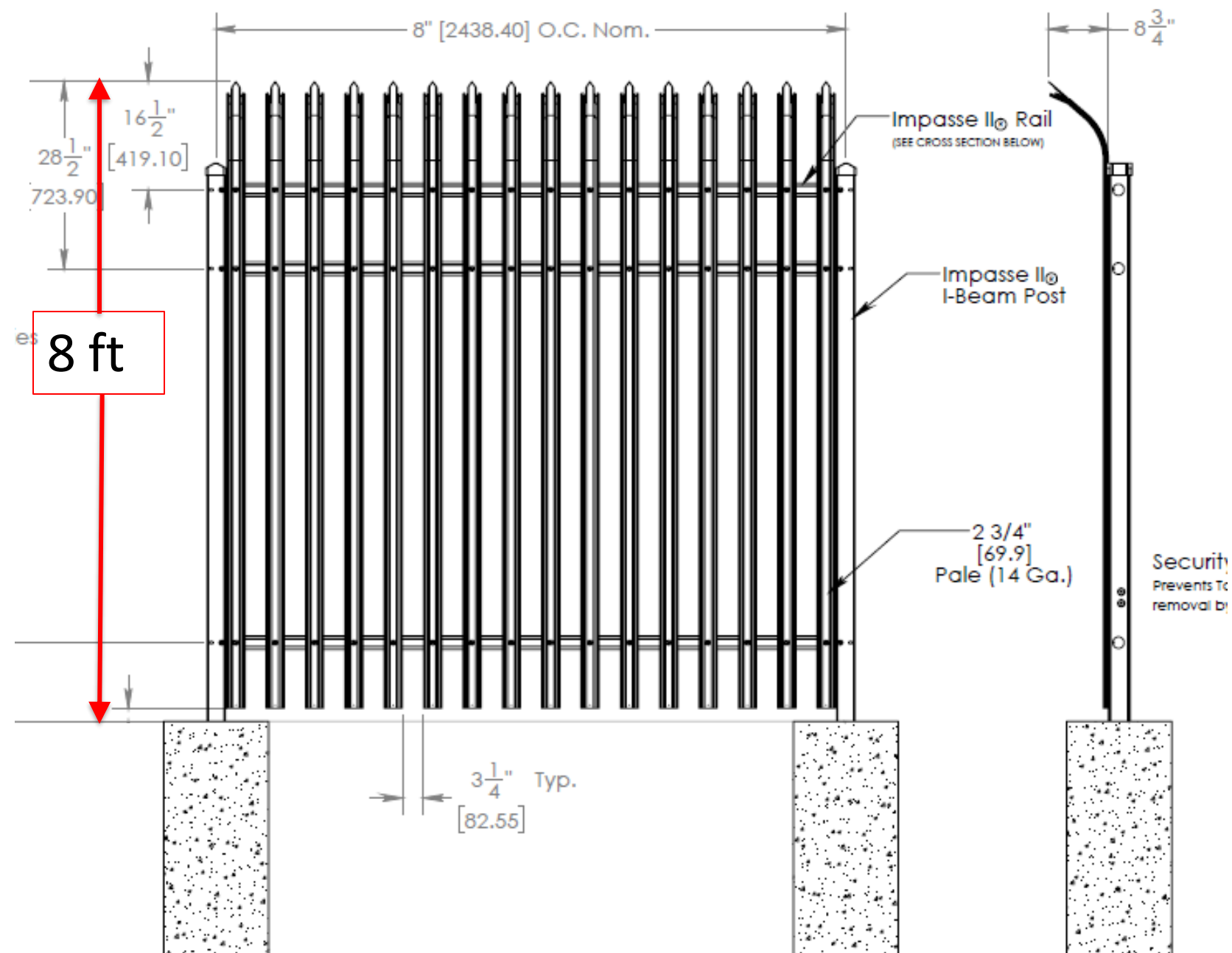
Fence Type and Height

Lower fence would be installed at public crossings



Visually more open:
Pickets 3/4" wide spaced at 3 15/16"

Standard 8 ft fence proposed at locations with high trespasser traffic/security concerns



Pickets 2 3/4" wide spaced at 3 3/4"

Year 4 (2023) Fencing Program Locations (Only Colonie Street Location Within the Coastal Zone)

Year	Within Coastal Zone	MP	Location	Gates (No.)	Gate Height	Fence (LF)	Fence Height	Near/At Grade Crossing	Closest Grade Crossing	MP	Distance to Crossing (mi)
4	Yes	143.5	Colonie Street, Albany, NY	0	N/A	600	8 ft	Yes	Tellers Road	139.98	3.52
4	No	145	Tivoli Lake Preserve, Albany, NY	0	N/A	3,500	8 ft	Yes	Lincoln Ave	149.82	4.82
4	No	148.68	Fuller Road, Albany, NY	2	8 ft	0	N/A	Yes	Lincoln Ave	149.82	1.14
4	No	145.78	Watervliet Ave, Albany, NY	1	8 ft	0	N/A	Yes	Lincoln Ave	149.82	4.04
4	No	148.8	Rensselaer Lake, Albany, NY	1	8 ft	2,550	8 ft	Yes	Lincoln Ave	149.82	1.02
			Year 4 - Total	6		6,650					

Year 4 Linear Ft by Fence Height:

- 6,650 ft of 8' high

Albany - Colonie St.— Mile Post 143.5 – Year 4 - 2023



Year 5 (2024) Fencing Program Locations

- Year 5 Locations are all located between Schenectady and Amsterdam and not within the Coastal Zone